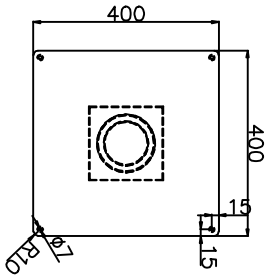
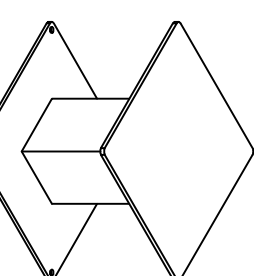
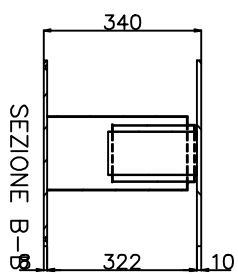
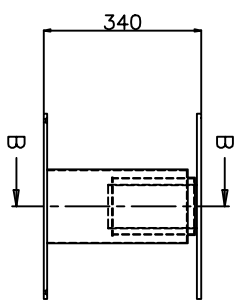
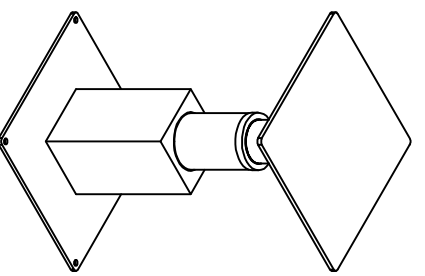
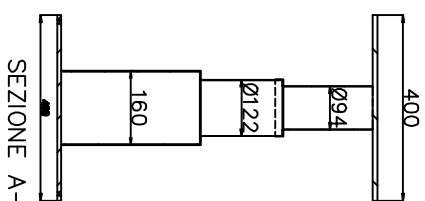
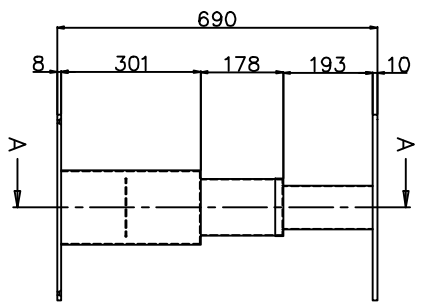


1 2 3 4 5 6 7 8



DIMENSIONI LINEARI mm:		PER DIAMETRI		ALBERI h13		FORI h13	
TOLLERANZE	FINO	OLTRE	PER	OLTRE	PER	OLTRE	PER
GROSSOLANO	±0,2	±0,3	12	18	12	18	12
MEDIO	±0,1	±0,2	18	30	18	30	18
PRECISO	±0,08	±0,05	30	50	30	50	30
Dimensioni angolari		RINO		10		30	
		MEDIO		±1		±0,20'	
		PRECISO		±1		±0,10'	

MATERIALI	ACCIAIO AISI 316
	ALUMINIO

SCALA 1:1
 PER GREGGI, FUSIONI, STAMPATI VEDI NORME SPECIFICHE
 QUANTITÀ DISPONIBILI DA L.BELOTTI
 09-09-2010
 G.CONZADORI
 Questo disegno è di proprietà della ATEP ITALIA a norma di legge e' vietata la riproduzione, lo sfruttamento e la comunicazione a terzi. This drawing is the property of ATEP ITALIA. Reproduction, use, and disclosure to third parties is forbidden by law.

ATEP

24067 - Servizio (Bg) - Italy - Corso Europa .32
 Tel. +39 035.913344 - Fax.+39 035.911819
 www.atep.it - info@atep.it

CANTIERE

DENOMINAZIONE
 Supporto Tavolo elettrico AISI316/ALL.

CODICE MODELLO
 20.18898A2/INOX

D/S.N.
 S120

F E D C B A